

ALTA/ACSM LAND TITLE SURVEY

FILE NUMBER 0830223



St. Paul Office
2335 West Highway 36
Saint Paul, MN 55103
Phone: 651-436-5000
Fax: 651-656-1311
Website: www.bonestroo.com

SURVEY BY: JIN
DRAWN BY: SD
DESIGNED BY: TDL
APPROVED BY: TDL
DATE: 08/11/08
© BONESTROO 2008

DATE

REVISION

REVISION

REVISION

REVISION

REVISION

REVISION

REVISION

REVISION

REVISION

REVISION

LAND DESCRIPTION

Lots numbered nine (9) and ten (10) and all of Lot numbered eight (8) except the south twenty-four (24) feet thereof, and the west onethird (1/3) of Lots numbered one (1), two (2) and three (3) except the north sixty-five (65) feet of the east six (6) inches thereof, all in Block numbered thirty (30) of the original town (now city) of Stillwater, as surveyed, platted and now of record in the office of the Register of Deeds in and for said Washington County, Minnesota.

Miscellaneous Notes

- The property described hereon is the same as the property described in the title commitment, prepared by Heartland Title, file number 0830223 and was prepared on February 17, 2008.
- The subject property contains 29,341 square feet, (0.67 acres) of land, more or less.
- The utilities shown hereon were located using the Gopher State One-Call system and verified in the field where possible. Private utility locations, such as underground sprinklers, underground service lines, etc. may not have been located. Bonestroo cannot guarantee that all utility companies responded or the accuracy or completeness of the locates. Prior to any digging, contact Gopher One at 1-800-252-1166 and refer to ticket number 70701962.
- The plat of ORIGINAL CITY OF STILLWATER was filed in the Office of the County Recorder, Washington County, Minnesota on the 19th day of March, 1981 as Document No. 416049.
- The bearing system is based upon Washington County coordinate system.
- There are parking areas along the north and west side of the building but no striping.
- The subject property has direct access to East Chestnut Street (County State Aid Highway No. 23), a dedicated public roadway.
- All recorded easements, if any, listed in Schedule B of the Commitment for Title Insurance No. 0830223 dated February 17, 2008, issued by Heartland Title Company located on the above described land are shown on this survey.
- There is an apparent encroachment by public sidewalk over the northwest corner of the property.

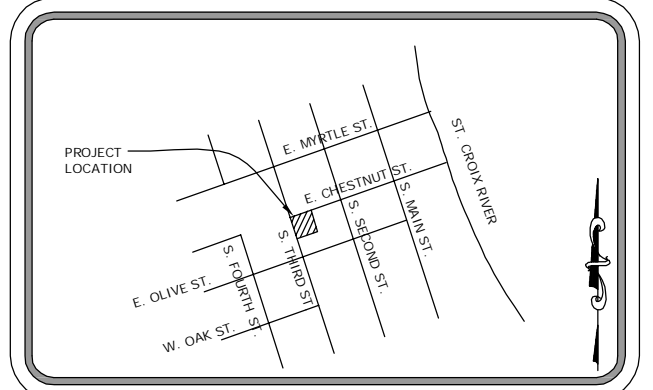
ALTA/ACSM Land Title Survey

To the State of Minnesota Department of Military Affairs:

This is to certify that this map or plat and the survey on which it is based were made in accordance with the "Minimum Standard Detail Requirements for ALTA/ACSM Land Title Surveys" jointly established by and adopted by ALTA and NSPS in 2005, and includes items 1, 2, 4, 8, 9, 10, 11b, 12, 13, 17, 19, and 20, as modified by the State of Minnesota, Department of Military Affairs Facility Management Office, of Table A thereof. Pursuant to the Accuracy Standards as adopted by ALTA and NSPS and in effect on the date of this certification, undersigned further certifies that in my professional opinion, as a land surveyor registered in the State of Minnesota, the Relative Positional Accuracy of this survey does not exceed that which is specified therein.

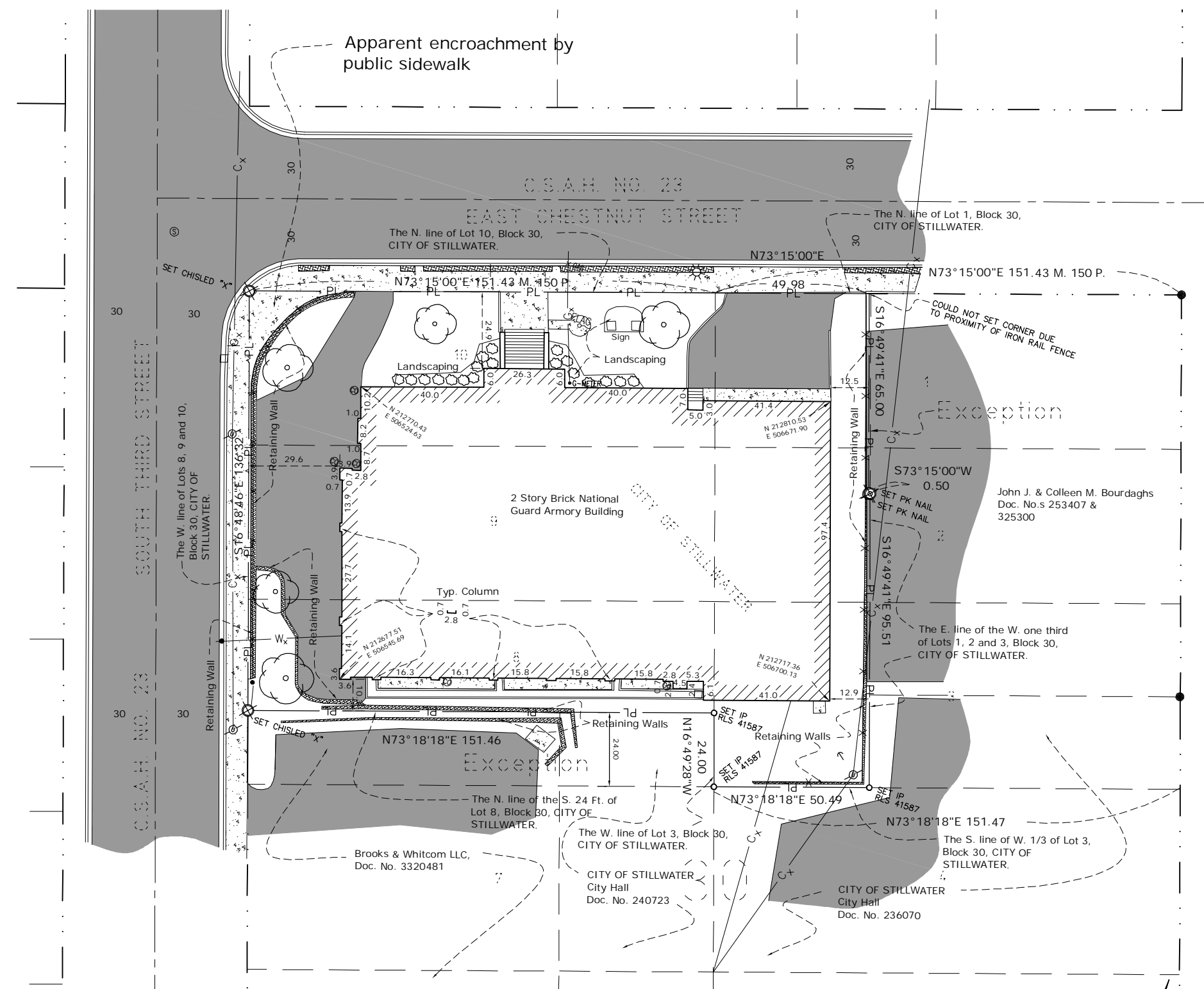
Stephen Douglas
Stephen Douglas, Professional Land Surveyor
Minnesota License Number 41587
12, May 2008

Stillwater, Minnesota



Vicinity Map

NOT TO SCALE

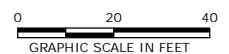


Statement of Encroachments

- There are retaining walls along the west and south lines of the property, ownership is unknown.
- The descriptions in Doc. No.s 253407 and 325300 create an overlap with the States property by 0.48 feet on parts of Lots 1 and 2, Block 30, Original Town (now City) of Stillwater.

Legend of Symbols & Abbreviations

	EX. SANITARY SEWER		GUY WIRE
	EX. STORM SEWER		POWER POLE
	EX. WATER MAIN		POWER BOX
	BURIED GAS MAIN		ELECTRIC METER
	CHAIN LINK FENCE		LIGHT POLE
	AERIAL UTILITIES		DECIDUOUS SHRUB
	GAS METER		DECIDUOUS TREE
	TELEPHONE PEDESTAL		BITUMINOUS PAVING
	CONCRETE		SIGN



- DENOTES IRON MONUMENT FOUND
- DENOTES 1/2 INCH BY 1 1/4 INCH IRON MONUMENT SET WITH PLASTIC PLUG INSCRIBED WITH BONESTROO 41587
- ⊗ DENOTES SET CHISLED "X"
- ⊙ DENOTES SET PK NAIL

T:\238\23807001\42- Stillwater\Cad\dwg\238-07002-42-TACC-1.dwg 5/12/2008 11:06 AM

DEPARTMENT OF MILITARY AFFAIRS
MINNESOTA NATIONAL GUARD - STILLWATER SITE
ALTA/ACSM SURVEY
FILE 238-07001-42

PROJECT NUMBER
238-07001-42
SHEET NUMBER
1301