



POPE ARCHITECTS
 1295 BANDANA BLVD N, SUITE 200
 ST. PAUL, MN 55108-2735
 (651) 642-9200 | FAX (651) 642-1101
 www.popearch.com

**HISTORIC STILLWATER
 ARMORY RENOVATION
 STILLWATER, MN**

107 CHESTNUT STREET EAST
 STILLWATER, MN 55082

NOT FOR CONSTRUCTION

**PROPOSED LOWER
 LEVEL FLOOR
 PLAN**

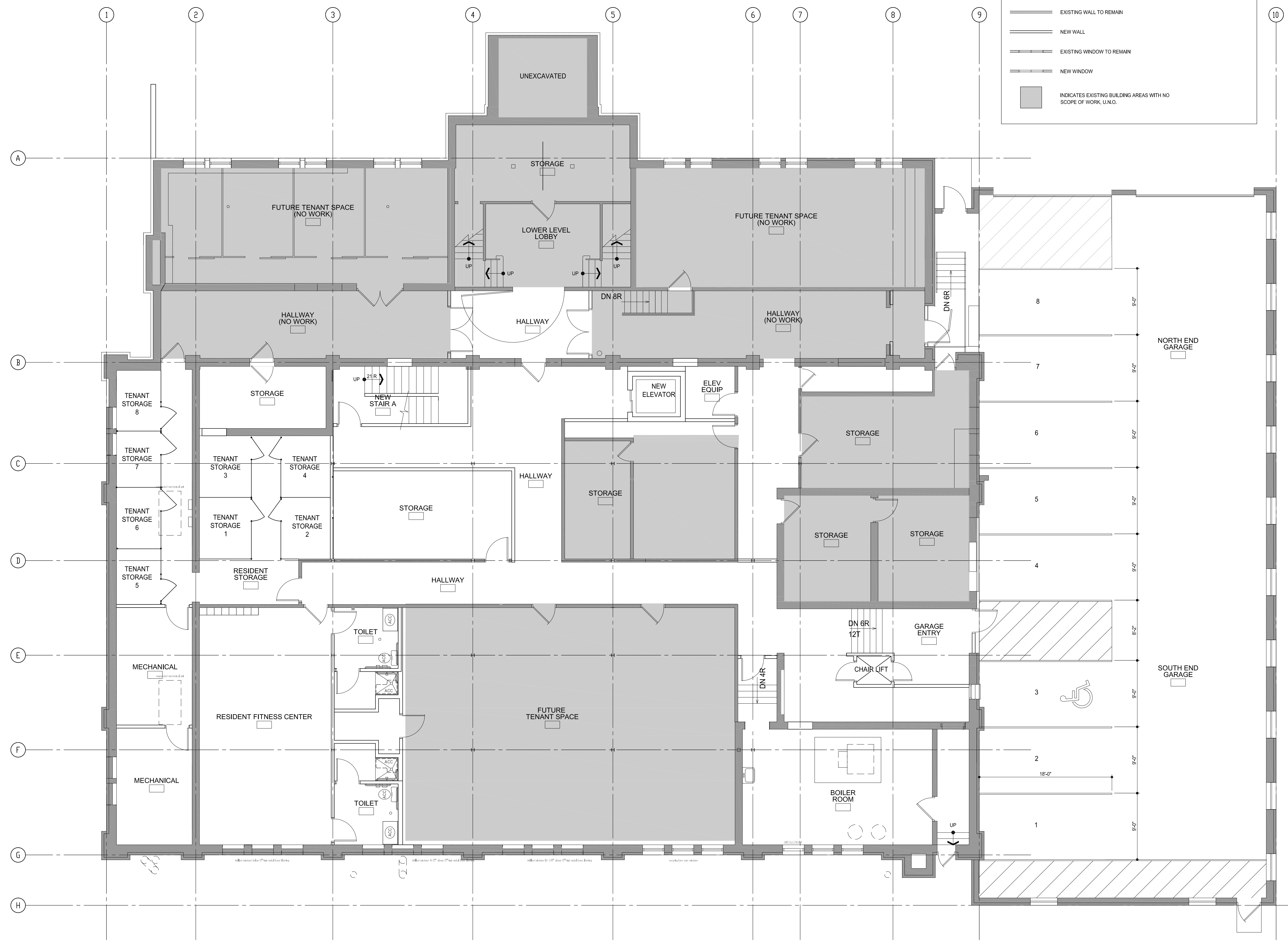
Issues and Revisions:
 ISSUED FOR REVIEW 07-17-19

Commission No. 18785-18207
 Drawn by DTP, MB
 Checked by BL, DTP

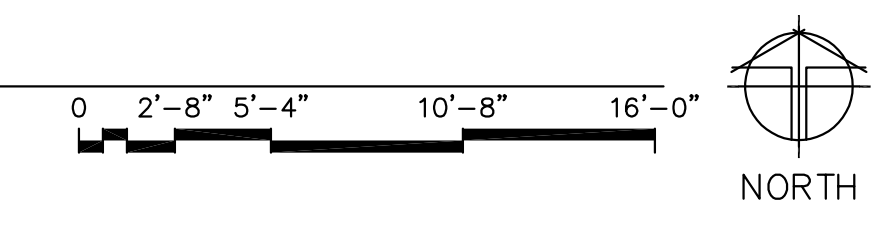
SHEET
A2.20
 THIS SHEET SCALE:
 0" 2'-8" 5'-4" 10'-8" 16'-0"

PLAN SYMBOLS

- EXISTING DOOR AND FRAME TO REMAIN
- NEW DOOR AND FRAME
- EXISTING WALL TO REMAIN
- NEW WALL
- EXISTING WINDOW TO REMAIN
- NEW WINDOW
- INDICATES EXISTING BUILDING AREAS WITH NO SCOPE OF WORK, U.N.O.



1 PROPOSED LOWER LEVEL FLOOR PLAN
 A2.20 3/16"=1'-0"





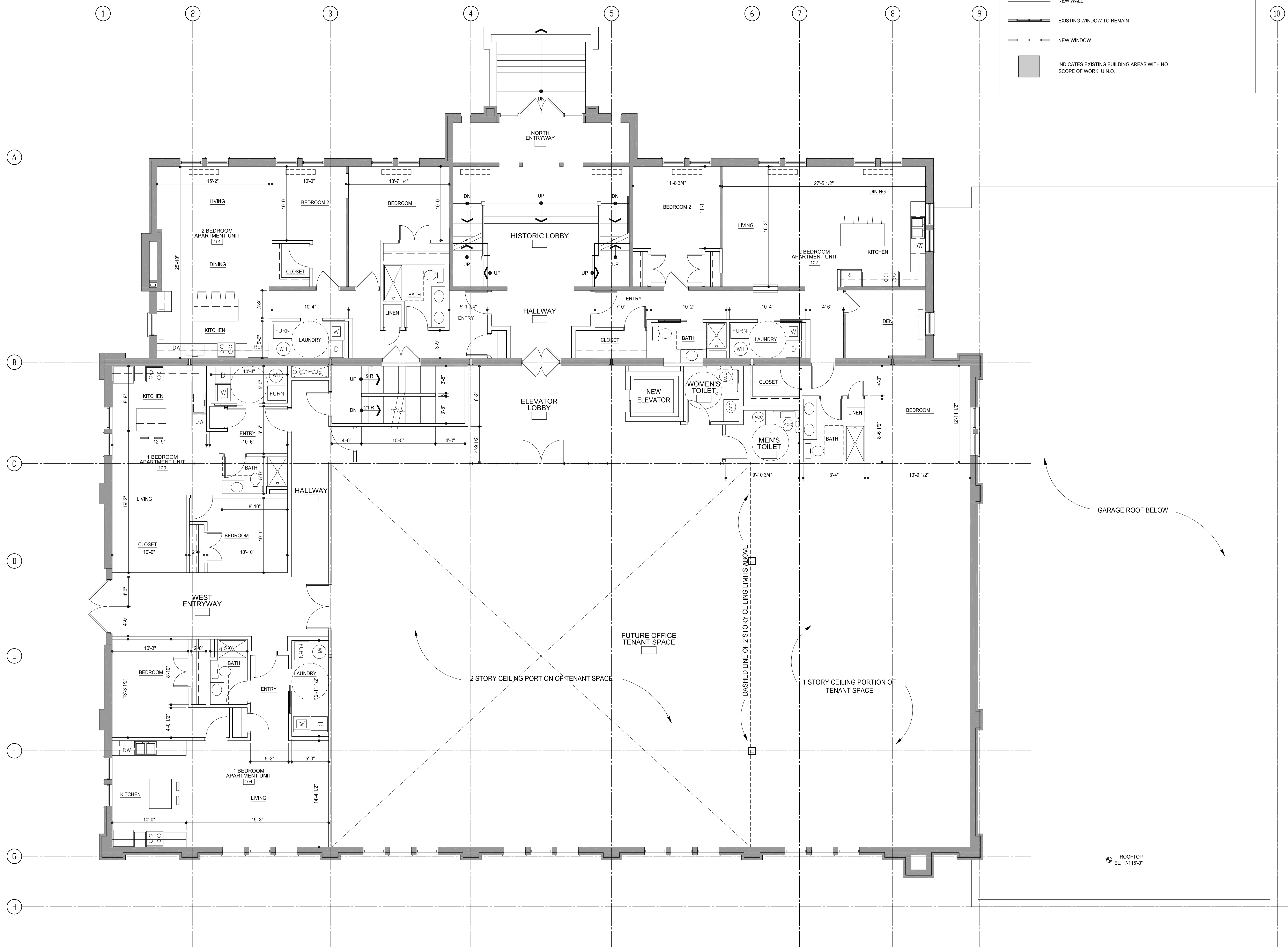
POPE ARCHITECTS
 1295 BANDANA BLVD N, SUITE 200
 ST. PAUL, MN 55108-2735
 (651) 642-9200 | FAX (651) 642-1101
 www.popearch.com

**HISTORIC STILLWATER
 ARMORY RENOVATION
 STILLWATER, MN**

107 CHESTNUT STREET EAST
 STILLWATER, MN 55082

PLAN SYMBOLS

- EXISTING DOOR AND FRAME TO REMAIN
- NEW DOOR AND FRAME
- EXISTING WALL TO REMAIN
- NEW WALL
- EXISTING WINDOW TO REMAIN
- NEW WINDOW
- INDICATES EXISTING BUILDING AREAS WITH NO SCOPE OF WORK, I.N.O.



NOT FOR CONSTRUCTION

**PROPOSED FIRST
 LEVEL FLOOR
 PLAN**

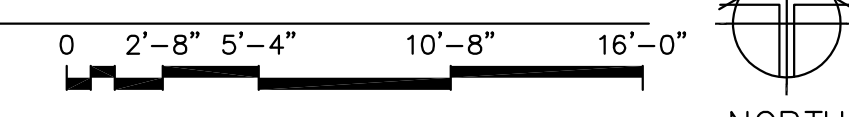
Issues and Revisions:
 ISSUED FOR REVIEW 07-17-19

Commission No. 18785-18207
 Drawn by DTP, MB
 Checked by BL, DTP

SHEET

A2.21

1 PROPOSED FIRST LEVEL FLOOR PLAN
 3/16"=1'-0"





POPE ARCHITECTS
 1295 BANDANA BLVD N, SUITE 200
 ST. PAUL, MN 55108-2735
 (651) 642-9200 | FAX (651) 642-1101
 www.popearch.com

**HISTORIC STILLWATER
 ARMORY RENOVATION
 STILLWATER, MN**

107 CHESTNUT STREET EAST
 STILLWATER, MN 55082

NOT FOR CONSTRUCTION

**PROPOSED
 SECOND FLOOR
 PLAN**

Issues and Revisions:
 ISSUED FOR REVIEW 07-17-19

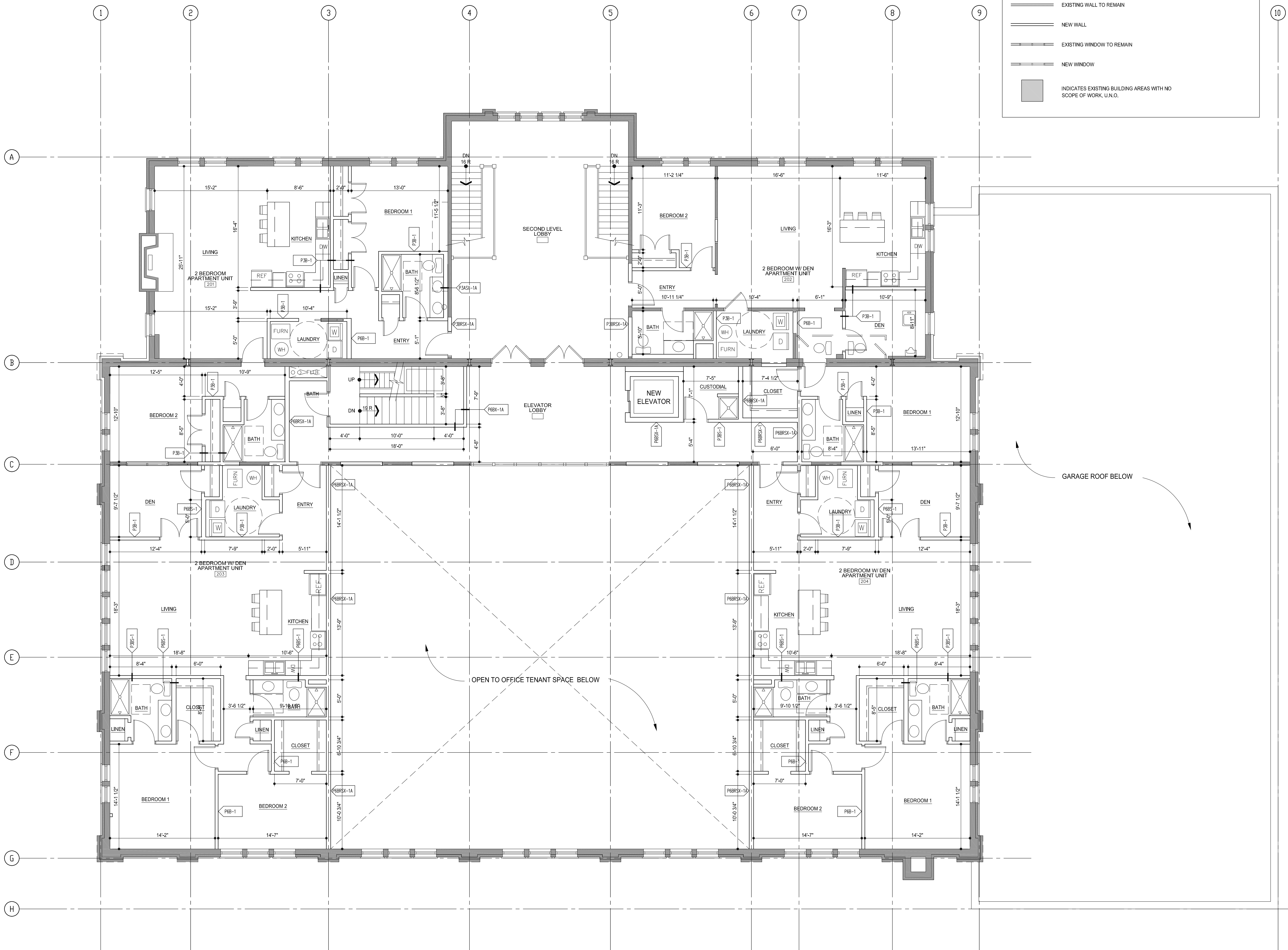
Commission No. 18785-18207
 Drawn by DTP, MB
 Checked by BL, DTP

SHEET

A2.22

PLAN SYMBOLS

- EXISTING DOOR AND FRAME TO REMAIN
- NEW DOOR AND FRAME
- EXISTING WALL TO REMAIN
- NEW WALL
- EXISTING WINDOW TO REMAIN
- NEW WINDOW
- INDICATES EXISTING BUILDING AREAS WITH NO SCOPE OF WORK, U.N.O.



1 PROPOSED SECOND FLOOR PLAN
 A2.22 3/16"=1'-0"

